

iShower

Remote Control

Contents

Introduction	2
How to	2
Add an account	2
Remove an account	5
Full access	6
Communication Diagram.....	7

Introduction

Today we have introduced a new feature to our products which is the control of our devices from outside your house.

In order to use this feature you will now need to create an account on your device to secure communication between your device, your Unique Automation product and our server.

This document will explain how to setup everything and to use it.

How to:

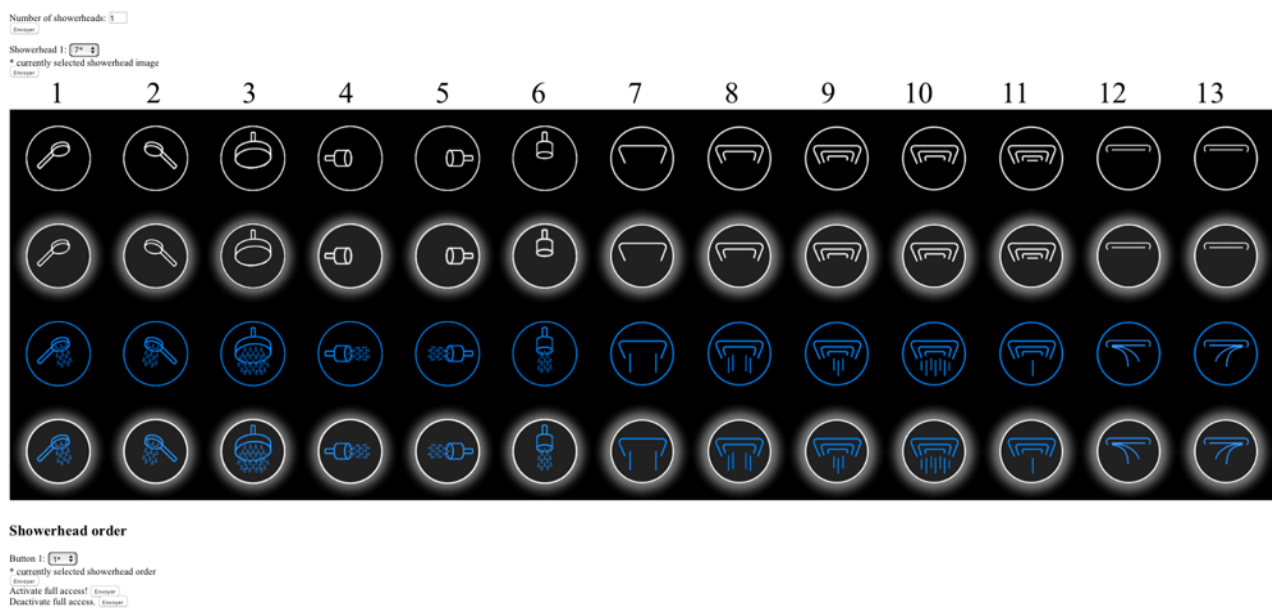
Add an account

First of all it is important to note that if you don't want to use remote control or if you don't have an active internet connection there is no need to register. You can still use your device without this feature enabled.

To create an account you will need an active internet connection, you will need to deactivate the full access feature (if it's not already deactivate by default on the device) and then create an account via a webpage.

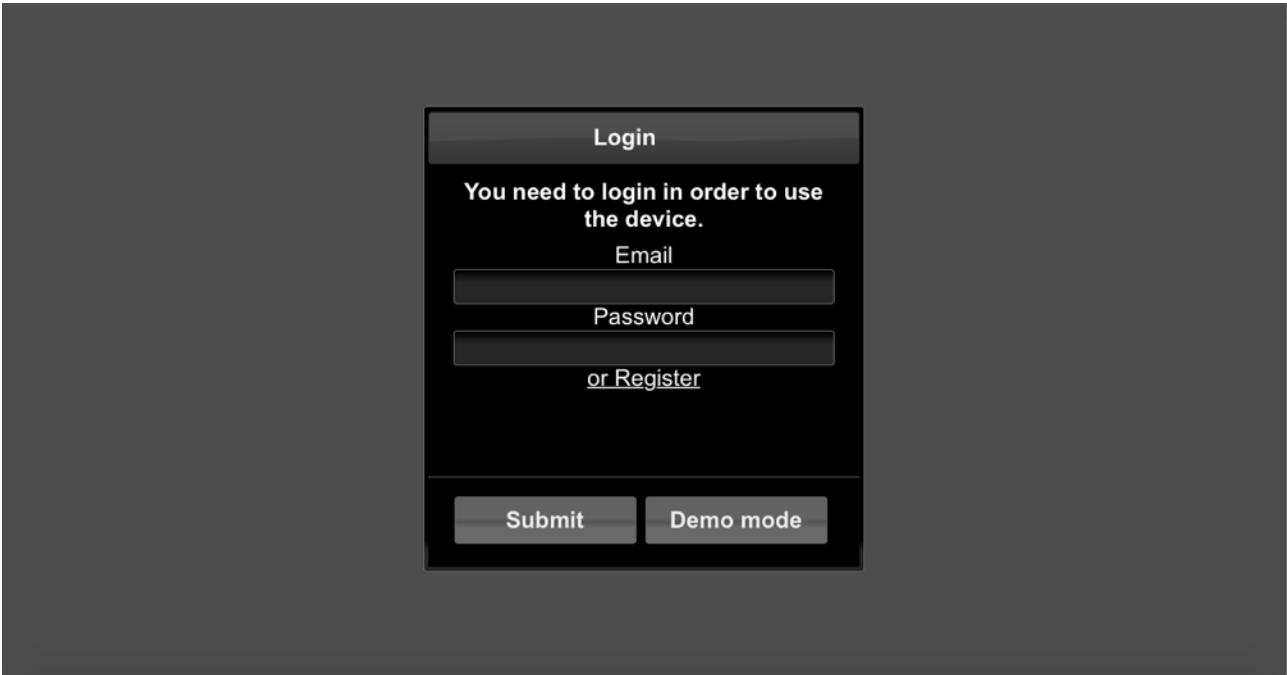
By default full access is deactivate but it may not be on your device. To check if it's already deactivated simply browse to the device (using the IP address i.e. `http://<ip_of_the_device>/`) and if login details are requested it means that the device is ready to register and you don't have to deactivate full access. If you do not see a login page you will need to deactivate full access. To do this you will have to go to the config page of your device, it can be found at:

`http://<ip_of_the_device>/shower_config.html`

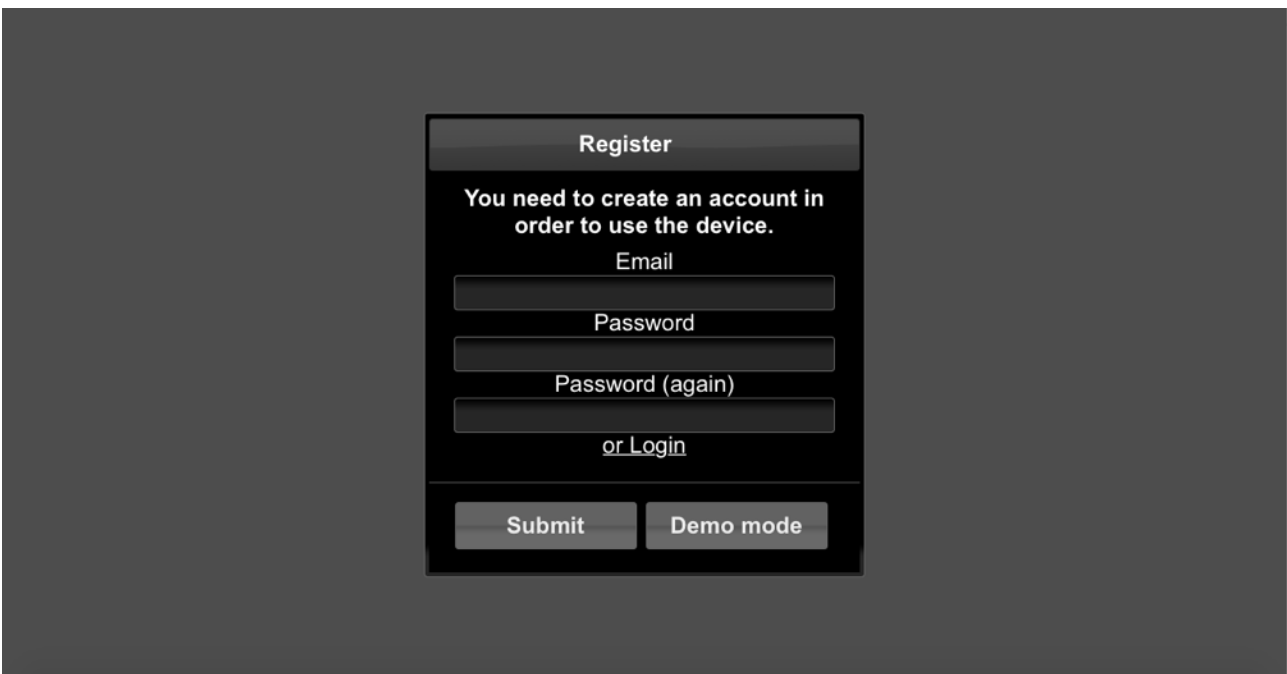


On this page you just need to click on « Deactivate full access » to enable registration mode, « Success! » should appear on the webpage.

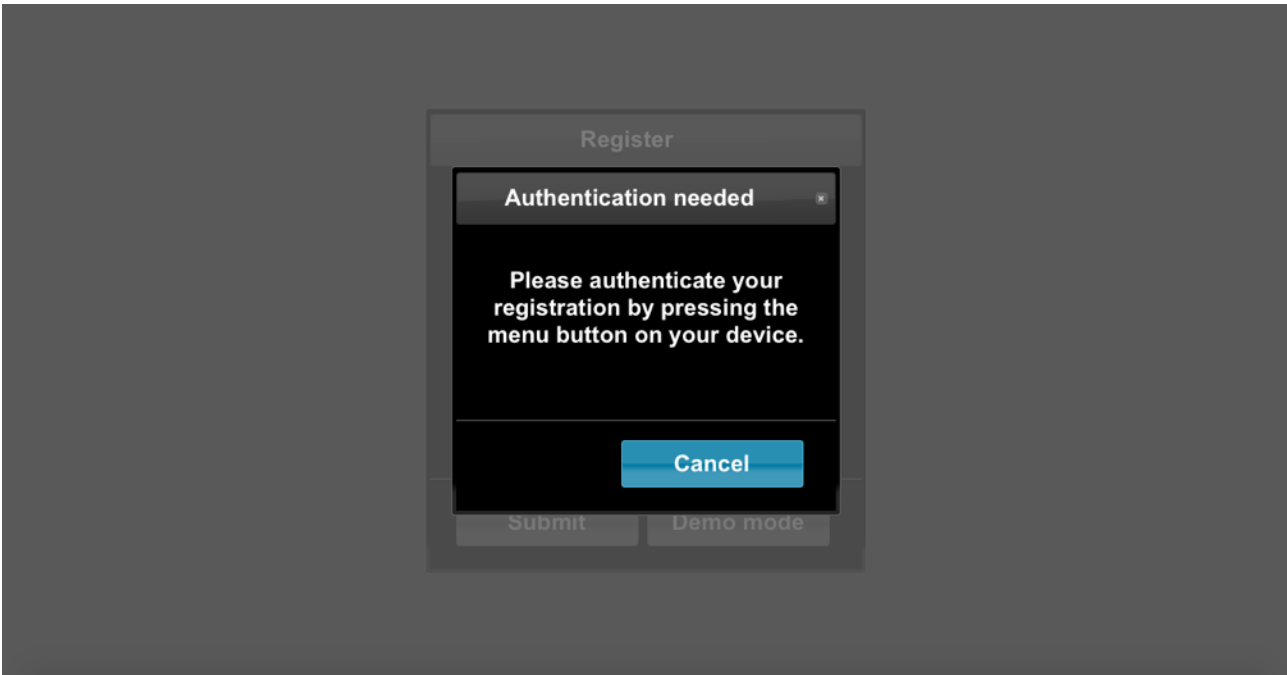
To create an account you just need to browse to `http://<ip_of_the_device>/` then a small popup appears to ask if you already have an account, if not you can create one.



Here we don't have an account so we will use the Register link. If you already have an account, with another UA device you can login using the same details.



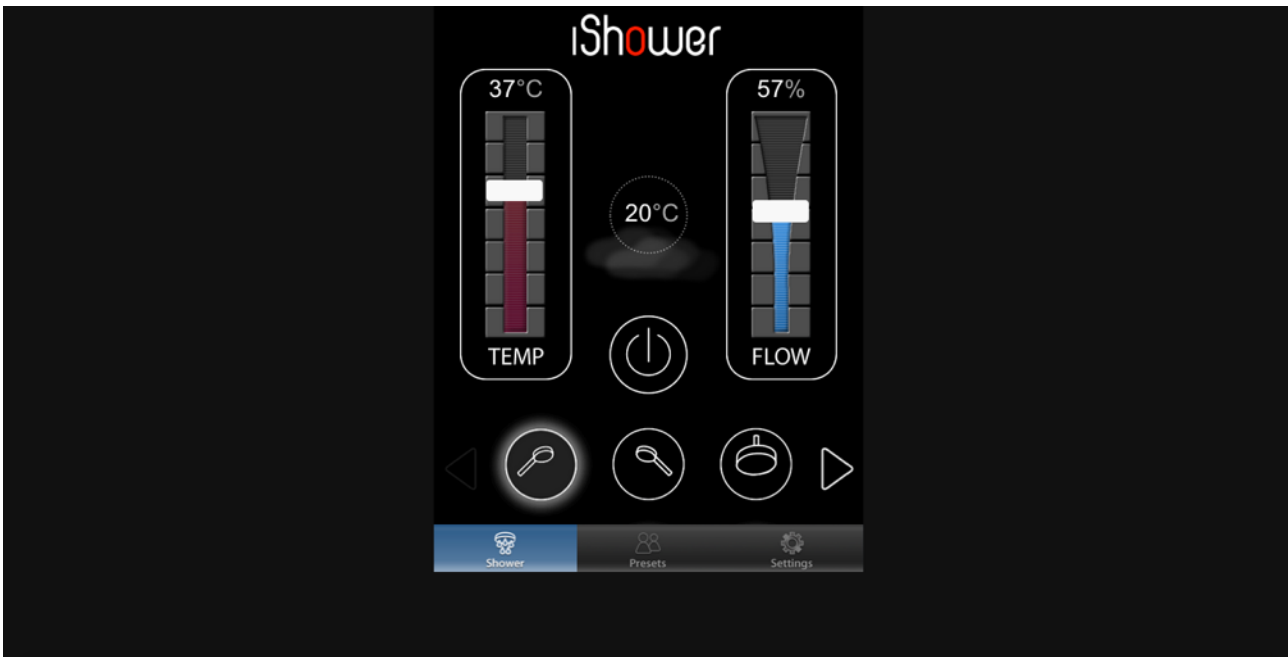
Here you only need a valid email address and then create a password to secure your device. When it's done click submit (you will have to physically authenticate your device by pressing the menu icon on the user interface)



To physically authenticate your device just press the following button

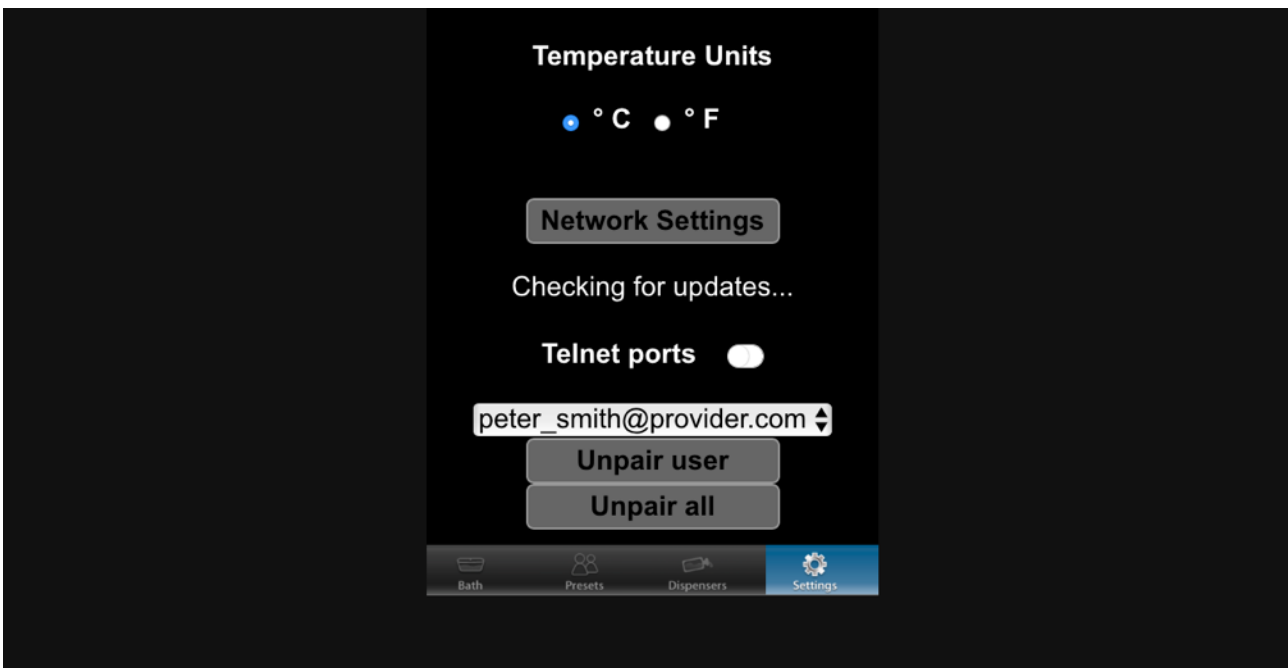


Once it's done the user interface will appear and now you can use the device by simply browsing to our website when you are not at home: <https://remote.dynamo.work>
Fill the login details previously create on the device and choose the device you want to control of course the same account can be used to setup all the device you have. The website enables the control of your devices from anywhere at anytime.



Remove an account

By going to on the Setting Tab you can easily remove an account on a device, this can be useful if you sell your device our your house with the product.



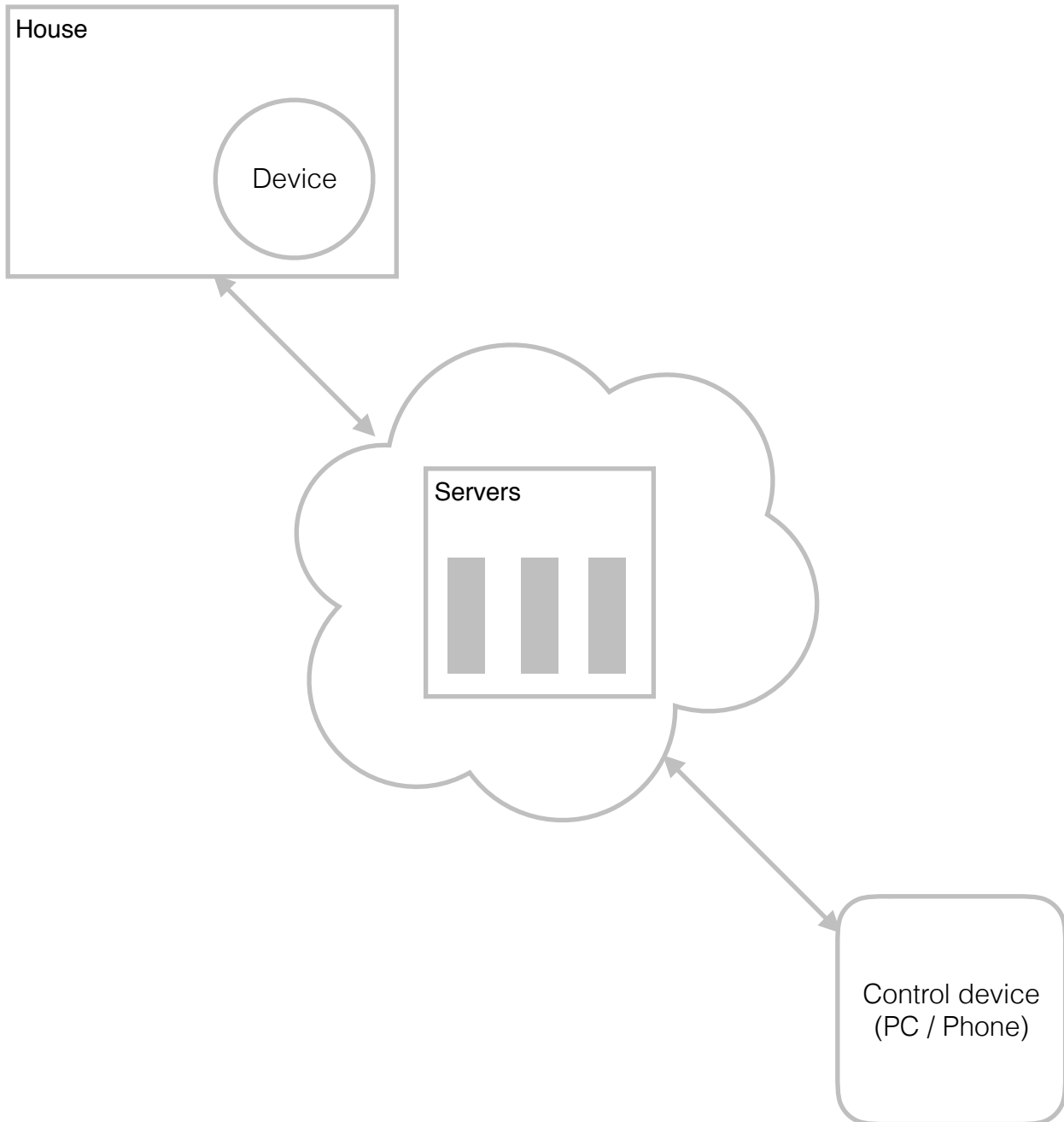
Full access

Full access is use by system integrators and installers to input information to the device without having an account, and it disable authentication so anybody on your local network can use your device (possibly without your permission).

It is enable by clicking on the Full access button on the configuration page and by pressing the three top buttons at the same time as follows.



Communication diagram



All communications use TLS to secure the data.
Our server uses https to secure the connection and communication between the server and any device is encrypted.

Always be careful of who is on your local network, anyone on your network can get your password if s/he knows how to examine communication between devices.